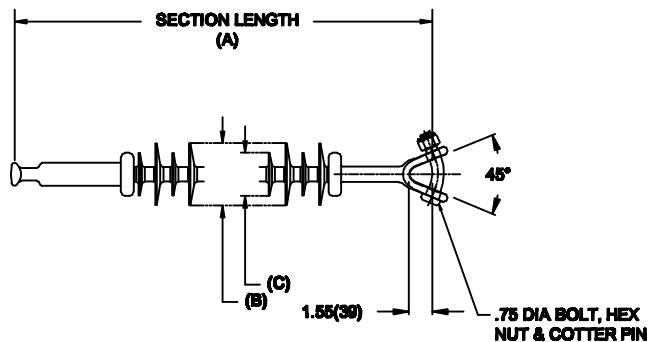


OHIO BRASS QUADRI*SIL SUSPENSION INSULATOR

CAT NO.: S025056E2010		
REV:	00	March 4, 2018



HUBBELL POWER SYSTEMS, INC.
 CUSTOMER SERVICE: (573) 682-5521
www.hubbellpowersystems.com



MECHANICAL VALUES	LBS	KN
SPECIFIED TENSILE LOAD (STL)	25000	111
MAX DESIGN TENSILE LOAD (RTL)	12500	55.5

ELECTRICAL VALUES	KV	
60 HZ DRY FLASHOVER (DRY WITHSTAND)	575	-
60 HZ WET FLASHOVER (WET WITHSTAND)	540	(405)
CRITICAL IMPULSE FLASHOVER + (WITHSTAND)	930	(835)
CRITICAL IMPULSE FLASHOVER - (WITHSTAND)	950	(855)
RIV AT 115% SYSTEM VOLTAGE	≤100 μV	

DIMENSIONAL VALUES	IN.	MM
SECTION LENGTH (A)	68.5	1739
MAJOR SHED DIAMETER (B)	5.83	148
MINOR SHED DIAMETER (C)	4.61	117
DRY ARC DISTANCE	59	1498
SHEATH THICKNESS	>0.118	>3
LEAKAGE DISTANCE	240	6096

END FITTINGS AND MATERIALS

LINE END: ANSI_52-5_BALL / GALV STEEL
 TOWER END: Y-CLEVIS / GALV STEEL

NOTES:

- SILICONE RUBBER SHEATH AND SHEDS. WASHABLE PER IEEE P957
- ELECTRICAL VALUES PER ANSI C29.17 (IEC 61109 & 62217)

OTHER DETAILS

CORONA RING (TOWER)	NONE	
CORONA RING (LINE)	NONE	
TORQUE REQUIREMENTS	N/A	
MOUNTING ANGLE	-	
NUMBER OF SHEDS	50	
WEIGHT	21.9 lbs.	9.9 kg.